

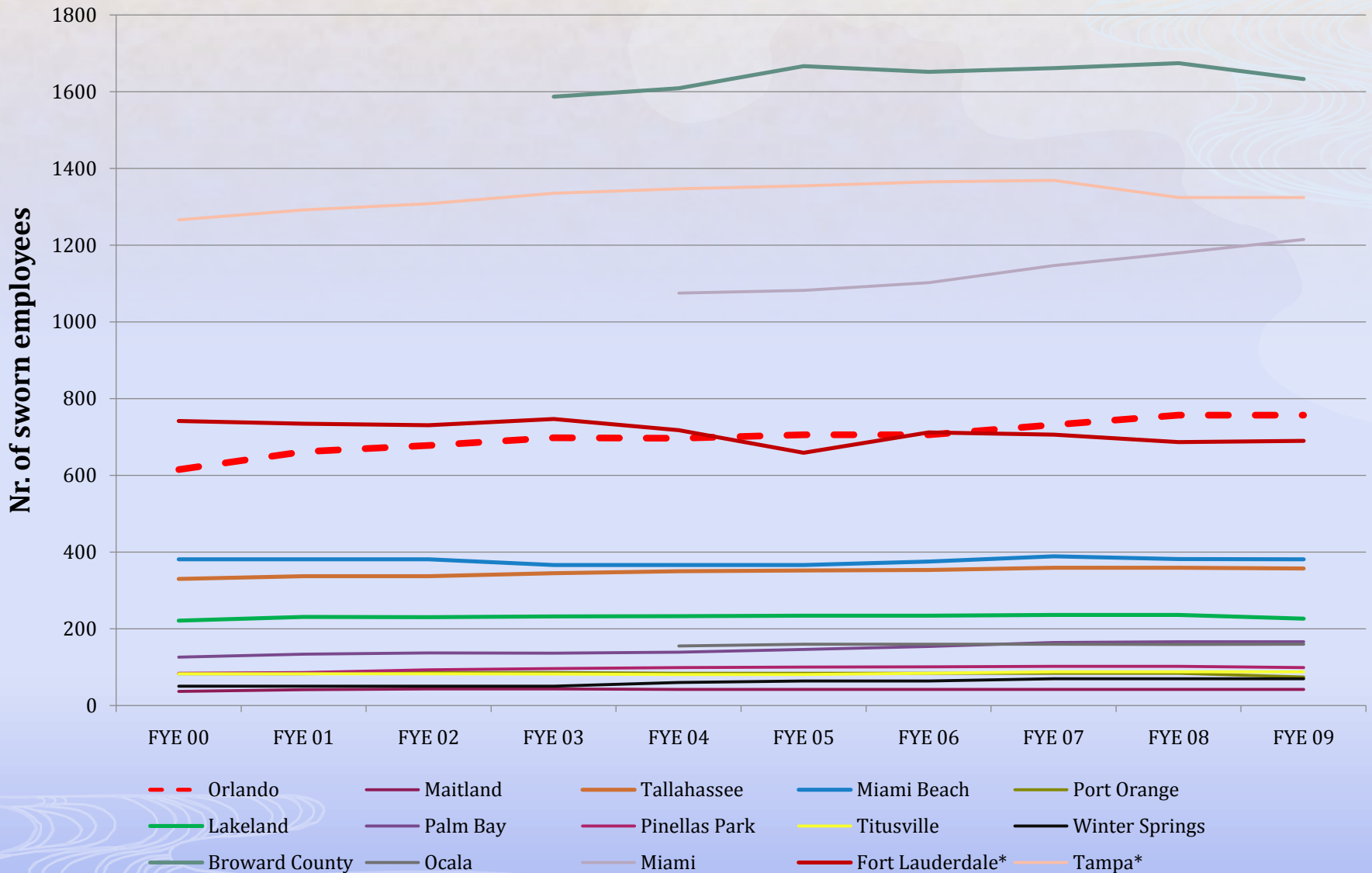
# Police & Fire Sworn Personnel Trend Analysis

Prepared by: Mike Stieber: Budget Manager

Ion Luchin: Management Analyst II

Mark Medlar: Budget Analyst III

# Sworn Police Personnel



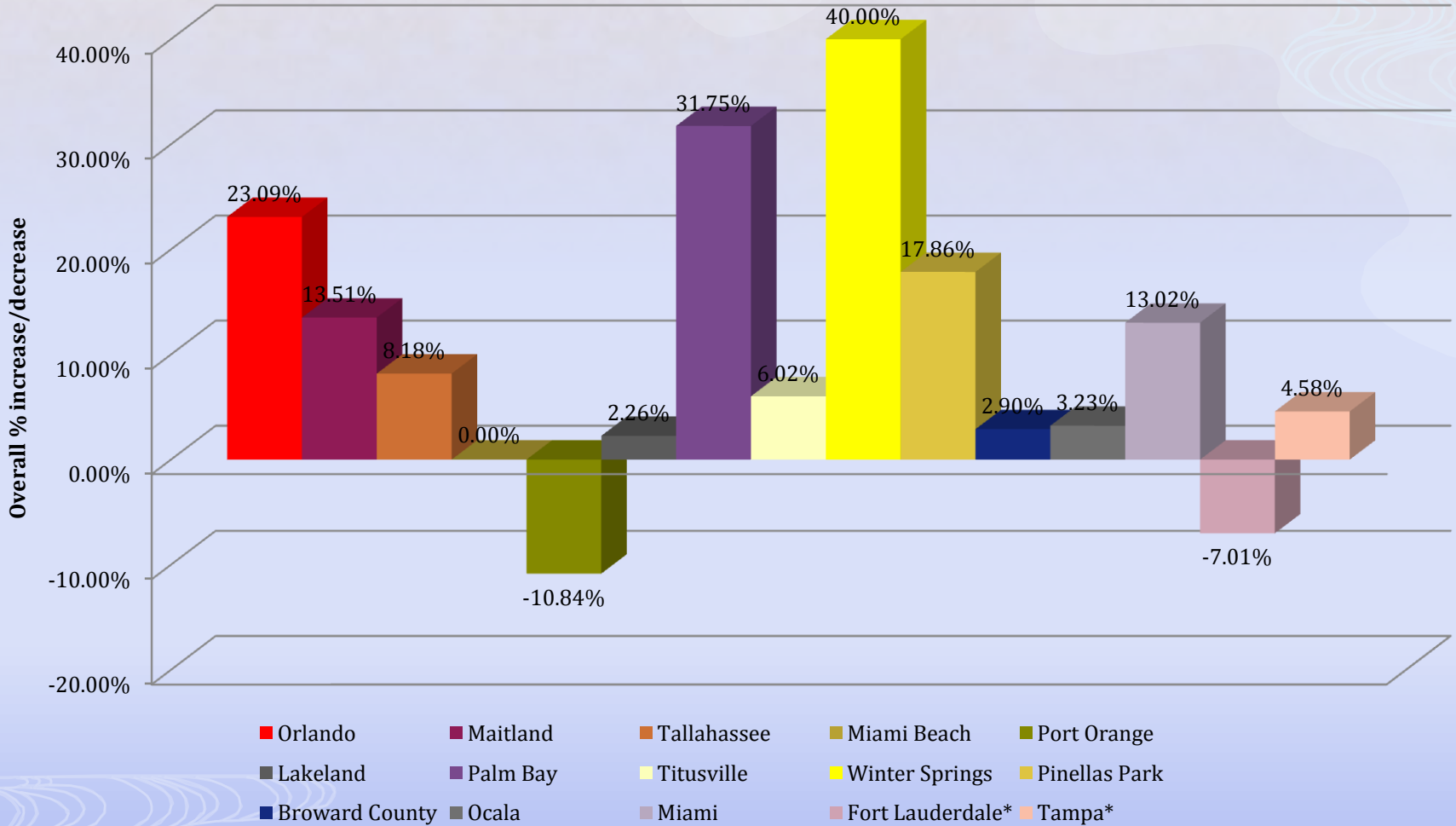
\* Includes sworn and non-sworn positions

## Sworn Police Personnel

Jurisdiction	FYE 00	FYE 01	FYE 02	FYE 03	FYE 04	FYE 05	FYE 06	FYE 07	FYE 08	FYE 09	Total Change
<b>Orlando</b>	615	662	678	698	697	706	706	732	757	757	142
<b>Maitland</b>	37	41	43	43	42	42	42	42	42	42	5
<b>Tallahassee</b>	330	337	337	345	350	352	353	359	359	357	27
<b>Miami Beach</b>	381	381	381	366	366	366	375	389	382	381	0
<b>Port Orange</b>	83	83	86	86	84	84	84	84	84	74	-9
<b>Lakeland</b>	221	231	230	232	233	234	234	236	236	226	5
<b>Palm Bay</b>	126	134	137	136	139	146	154	164	166	166	40
<b>Titusville</b>	83	83	83	82	81	81	84	88	88	88	5
<b>Winter Springs</b>	50	50	50	50	60	64	64	70	70	70	20
<b>Pinellas Park</b>	84	86	93	96	99	100	101	102	102	99	15
<b>Broward County</b>	n/a	n/a	n/a	1,587	1,609	1,667	1,652	1,662	1,675	1,633	46
<b>Ocala</b>	n/a	n/a	n/a	n/a	155	160	160	160	159	160	5
<b>Miami</b>	n/a	n/a	n/a	n/a	1075	1082	1102	1147	1180	1215	140
<b>Fort Lauderdale*</b>	742	735	731	747	718	659	712	706	687	690	-52
<b>Tampa*</b>	1,266	1,292	1,308	1,335	1,347	1,355	1,365	1,369	1,324	1,324	58

\* Includes sworn and non-sworn positions

## Sworn Police Personnel – Overall Trend Change in % (FYE00-FYE2009)



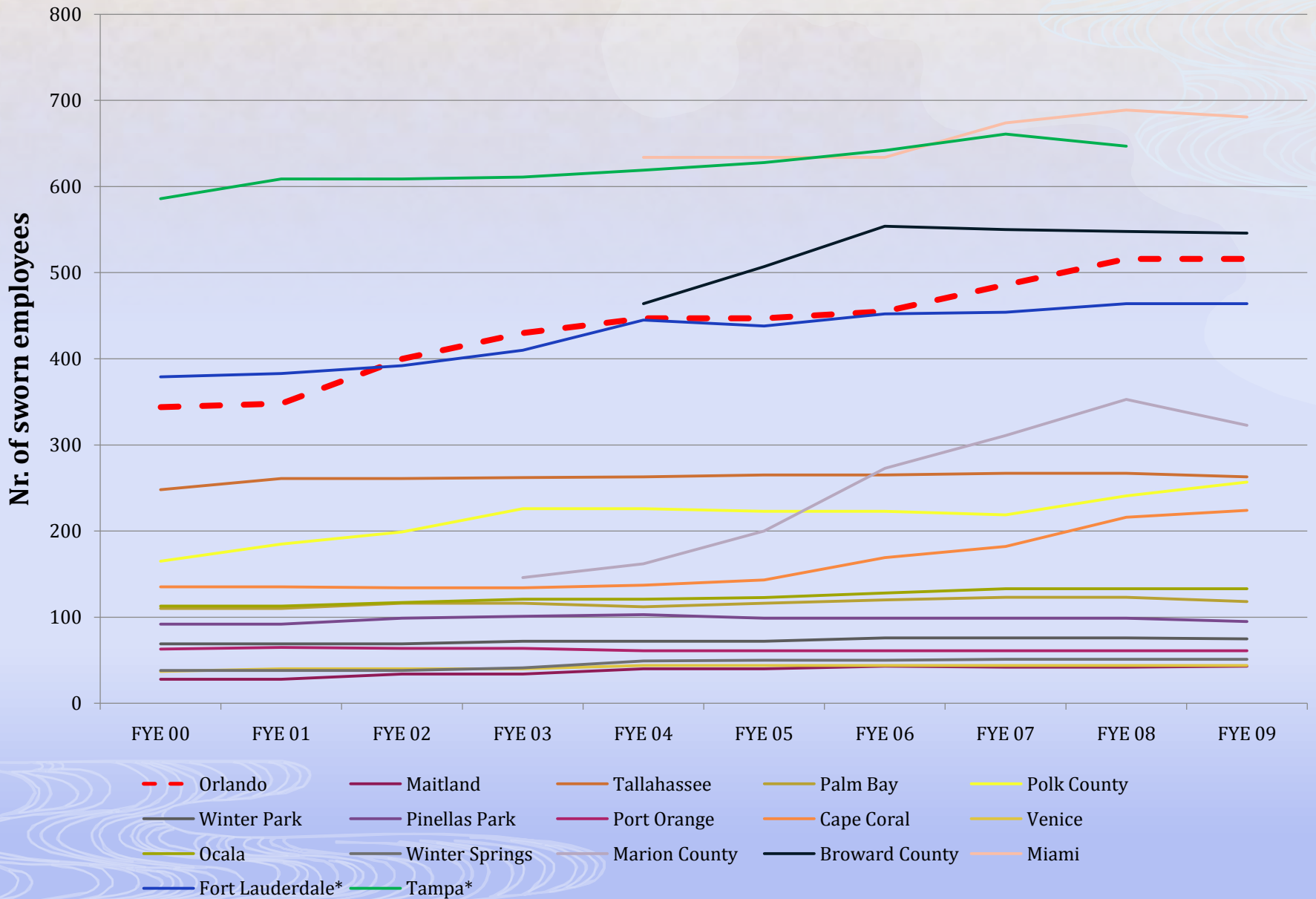
\* Includes sworn and non-sworn positions

## Sworn Police Personnel – Overall Trend Change in % (FYE00-FYE2009)

Jurisdiction	Overall Trend Change in % (FYE00-FYE2009)
Winter Springs	40.00%
Palm Bay	31.75%
Orlando	23.09%
Pinellas Park	17.86%
Maitland	13.51%
Miami	13.02%
Tallahassee	8.18%
Titusville	6.02%
Tampa*	4.58%
Ocala	3.23%
Broward County	2.90%
Lakeland	2.26%
Miami Beach	0.00%
Fort Lauderdale*	-7.01%
Port Orange	-10.84%

\* Includes sworn and non-sworn positions

# Sworn Fire Personnel



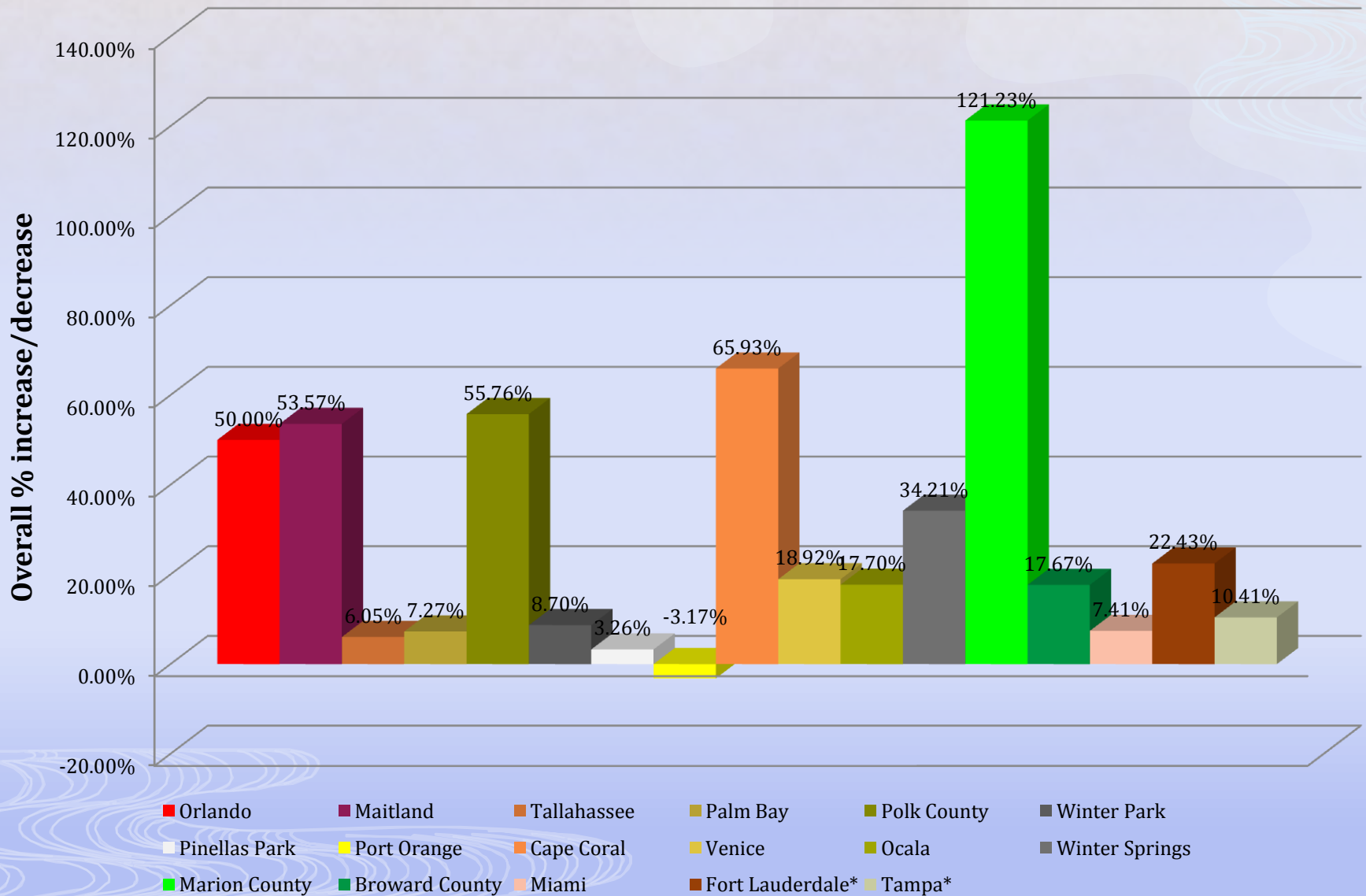
\* Includes sworn and non-sworn positions

# Sworn Fire Personnel

Jurisdiction	FYE 00	FYE 01	FYE 02	FYE 03	FYE 04	FYE 05	FYE 06	FYE 07	FYE 08	FYE 09	Total Change
<b>Orlando</b>	344	348	400	430	447	447	455	486	516	516	172
<b>Maitland</b>	28	28	34	34	40	40	43	42	42	43	15
<b>Tallahassee</b>	248	261	261	262	263	265	265	267	267	263	15
<b>Palm Bay</b>	110	110	116	116	112	116	120	123	123	118	8
<b>Polk County</b>	165	185	199	226	226	223	223	219	241	257	92
<b>Winter Park</b>	69	69	69	72	72	72	76	76	76	75	6
<b>Pinellas Park</b>	92	92	99	101	103	99	99	99	99	95	3
<b>Port Orange</b>	63	65	64	64	61	61	61	61	61	61	-2
<b>Cape Coral</b>	135	135	134	134	137	143	169	182	216	224	89
<b>Venice</b>	37	40	40	40	44	44	44	44	44	44	7
<b>Ocala</b>	113	113	117	121	121	123	128	133	133	133	20
<b>Winter Springs</b>	38	38	38	41	49	50	50	51	51	51	13
<b>Marion County</b>	n/a	n/a	n/a	146	162	200	273	311	353	323	177
<b>Broward County</b>	n/a	n/a	n/a	n/a	464	507	554	550	548	546	82
<b>Miami</b>	n/a	n/a	n/a	n/a	634	634	634	674	689	681	47
<b>Fort Lauderdale*</b>	379	383	392	410	445	438	452	454	464	464	85
<b>Tampa*</b>	586	609	609	611	619	628	642	661	647	647	61

\* Includes sworn and non-sworn positions

# Sworn Fire Personnel – Overall Trend Change in % (FYE00-FYE2009)



\* Includes sworn and non-sworn positions



## Sworn Fire Personnel – Overall Trend Change in % (FYE00-FYE2009)

Jurisdiction	Overall Trend Change in % (FYE00-FYE2009)
Marion County	121.23%
Cape Coral	65.93%
Polk County	55.76%
Maitland	53.57%
Orlando	50.00%
Winter Springs	34.21%
Fort Lauderdale*	22.43%
Venice	18.92%
Ocala	17.70%
Broward County	17.67%
Tampa*	10.41%
Winter Park	8.70%
Miami	7.41%
Palm Bay	7.27%
Tallahassee	6.05%
Pinellas Park	3.26%
Port Orange	-3.17%

\* Includes sworn and non-sworn positions